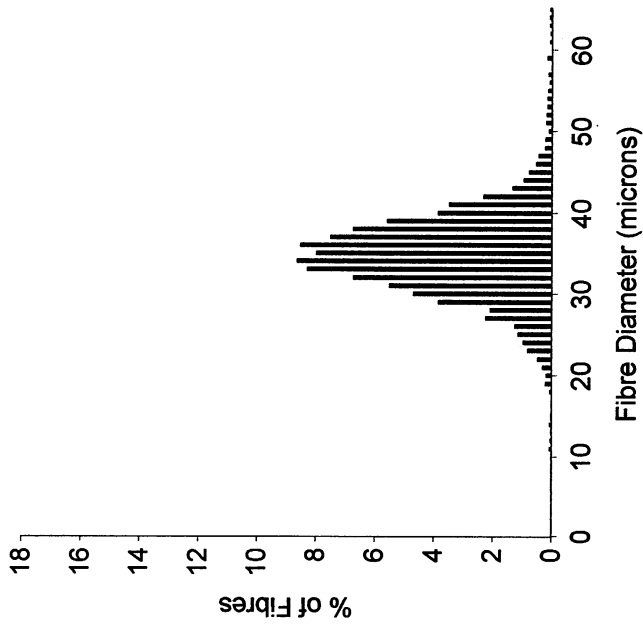


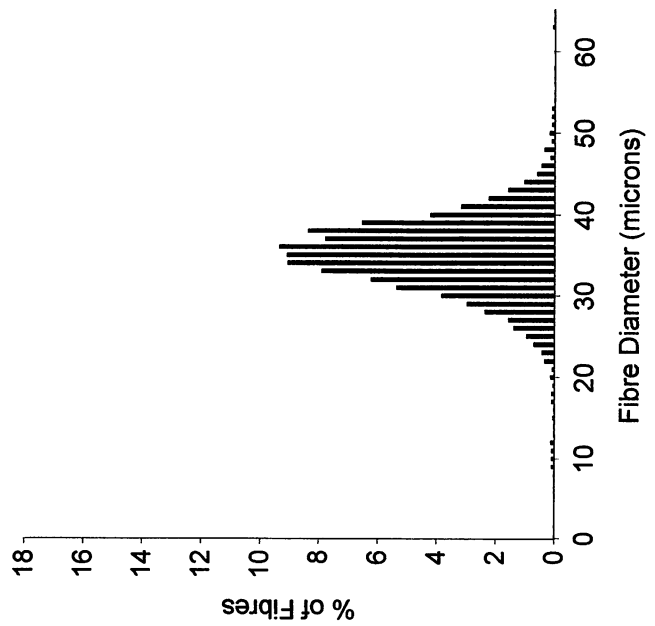
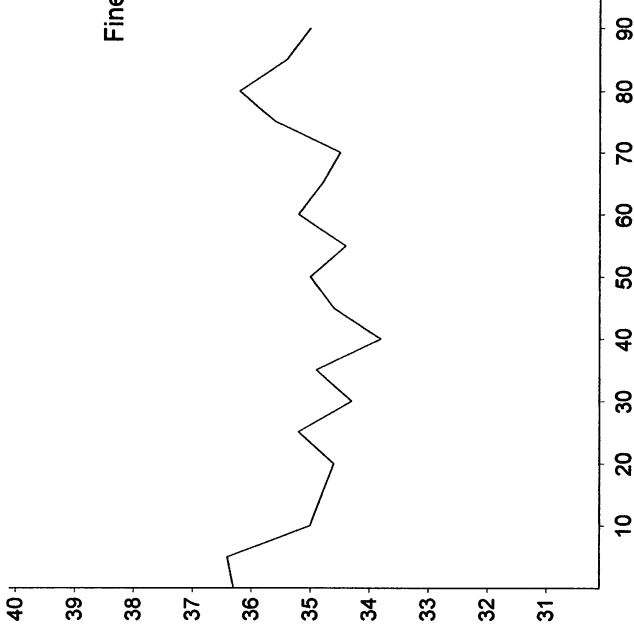
OFDA 2000 REPORT

Local Cloth 1/14/21 (16Records)



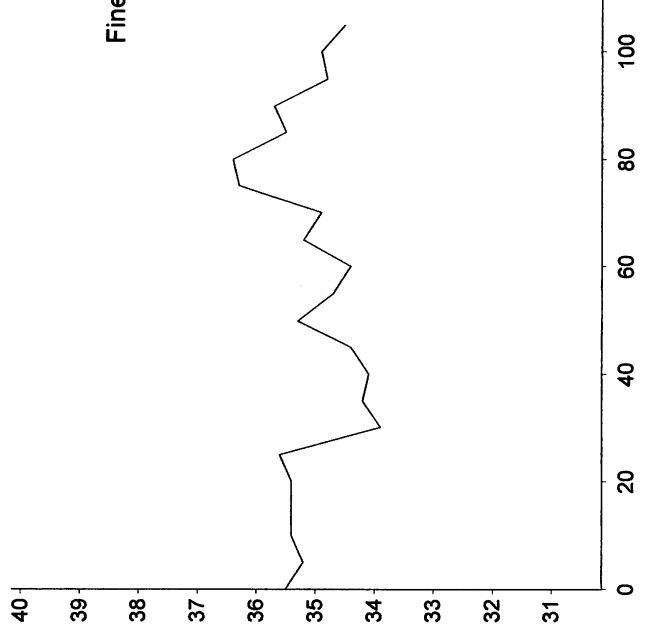
EID :
 EarTag : Teeswater
 MicRank : 15
 Micron : 34.9 mic
 MicDev : +6.5 mic
 SD : 5.7 mic
 CVD : 16.3 %
 CEM : 9.0 mic
 <15 : 0.2 %
 CF : 18.6 %
 SF : 32.7 mic
 CRV : 19.3 Dg/mm
 SDC : 17.2 Dg/mm

Staple Len : 95.0 mm
 Min Mic : 33.8 mic
 Max Mic : 36.4 mic
 Finest Point From Tip : 40.0 mm
 Fibre Ends : 0.7 mic
 SD Along : 0.70 mic

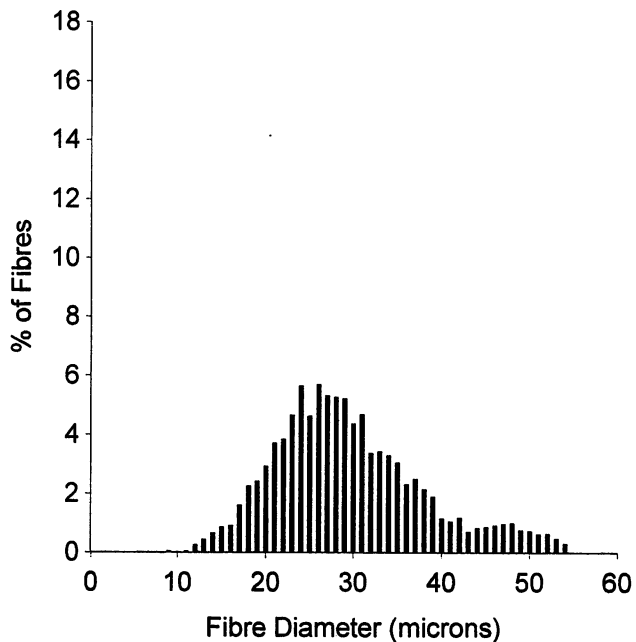


EID :
 EarTag : Teeswater
 MicRank : 16
 Micron : 35.0 mic
 MicDev : +6.6 mic
 SD : 5.2 mic
 CVD : 14.8 %
 CEM : 8.1 mic
 <15 : 0.5 %
 CF : 15.6 %
 SF : 32.4 mic
 CRV : 20.4 Dg/mm
 SDC : 21.7 Dg/mm

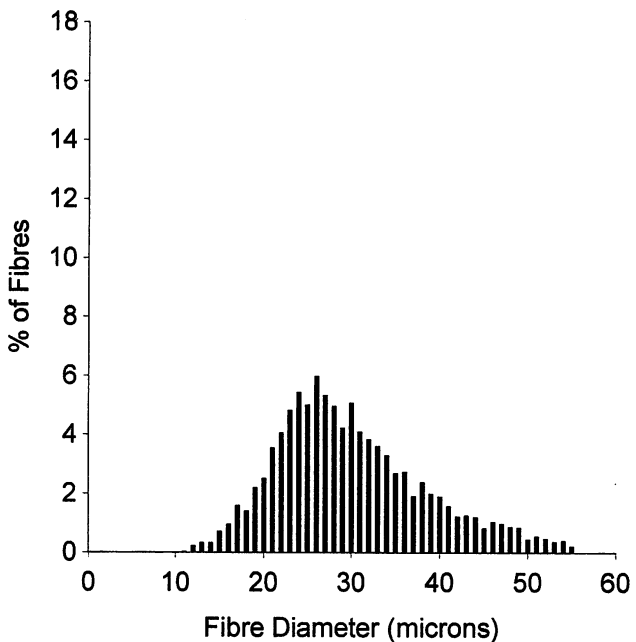
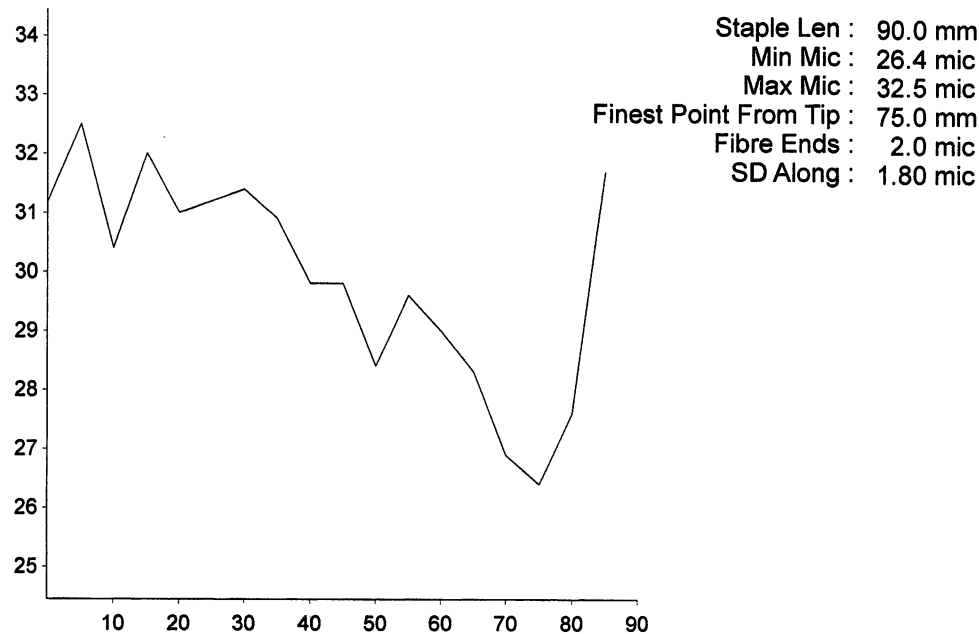
Staple Len : 110.0 mm
 Min Mic : 33.9 mic
 Max Mic : 36.4 mic
 Finest Point From Tip : 30.0 mm
 Fibre Ends : 0 mic
 SD Along : 0.70 mic



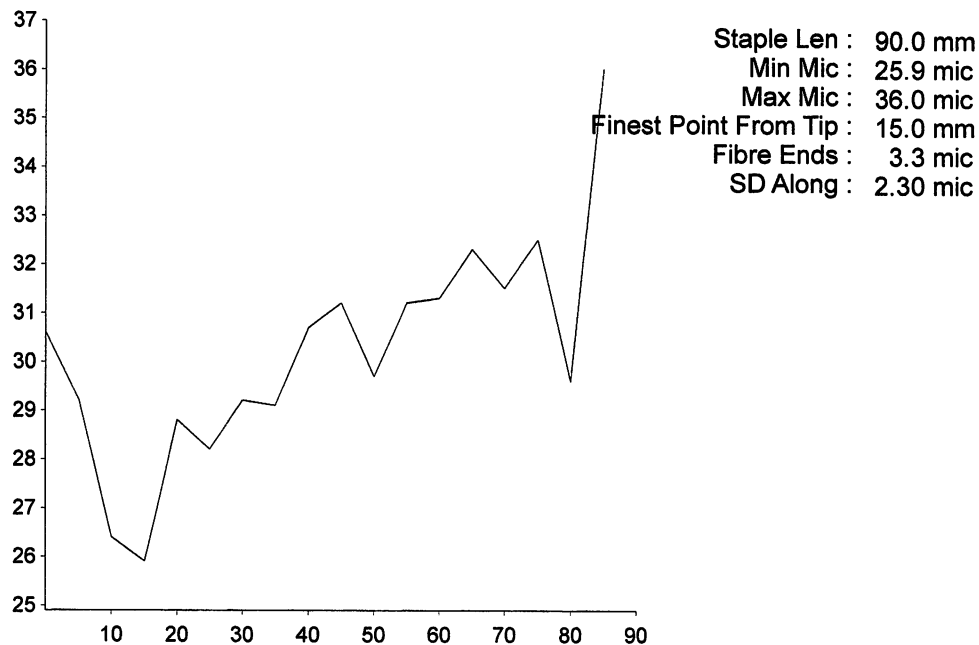
OFDA 2000 REPORT
Local Cloth 1/14/21 (16Records)



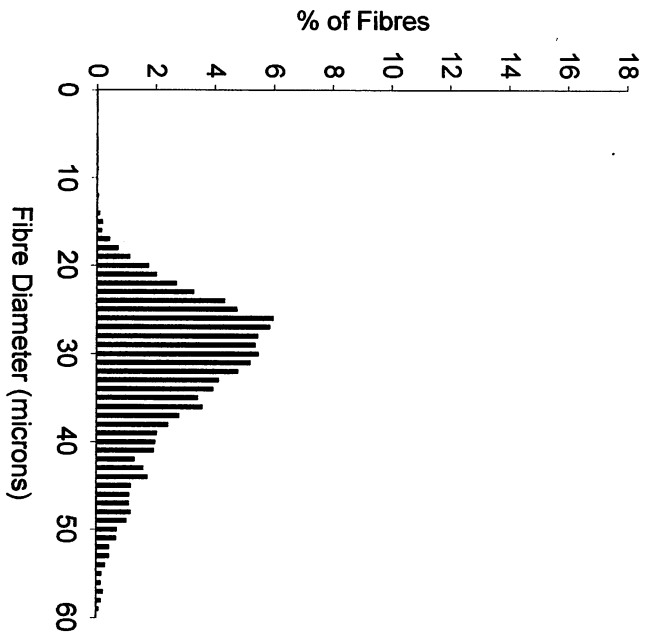
EID :
EarTag : Shetland
MicRank : 8
Micron : 29.5 mic
MicDev : +1.1 mic
SD : 8.5 mic
CVD : 28.9 %
CEM : 18.1 mic
<15 : 1.5 %
CF : 61.0 %
SF : 30.9 mic
CRV : 43.6 Dg/mm
SDC : 40.5 Dg/mm



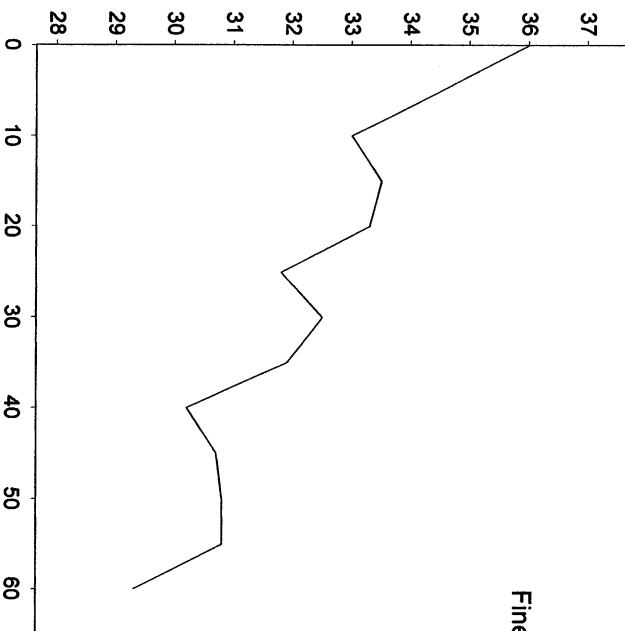
EID :
EarTag : Shetland
MicRank : 9
Micron : 30.0 mic
MicDev : +1.6 mic
SD : 8.5 mic
CVD : 28.3 %
CEM : 17.3 mic
<15 : 1.0 %
CF : 59.0 %
SF : 31.2 mic
CRV : 44.0 Dg/mm
SDC : 39.9 Dg/mm



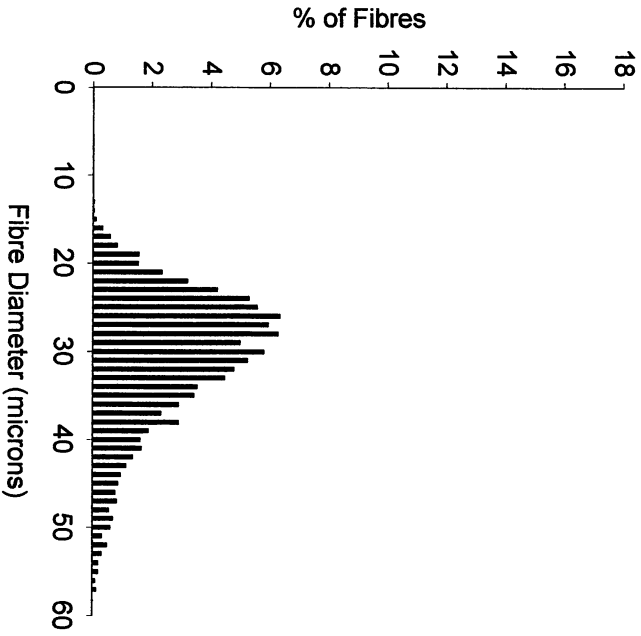
OFDA 2000 REPORT
Local Cloth 1/14/21 (16Records)



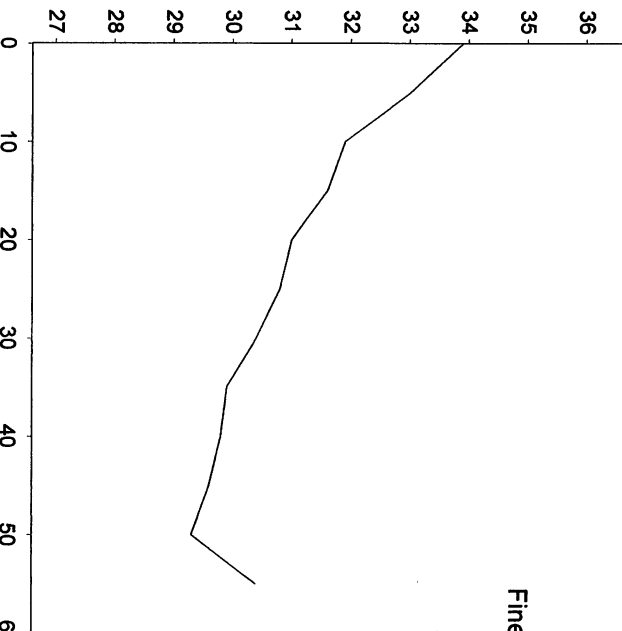
EID :
EarTag : Llama
MicRank : 13
Micron : 31.9 mic
MicDev : +3.5 mic
SD : 8.2 mic
CVD : 25.6 %
CEM : 16.6 mic
<15 : 0.2 %
CF : 50.0 %
SF : 32.4 mic
CRV : 17.7 Dg/mm
SDC : 17.7 Dg/mm



Staple Len : 65.0 mm
Min Mic : 29.3 mic
Max Mic : 36.0 mic
Finest Point From Tip : 60.0 mm
Fibre Ends : 0.8 mic
SD Along : 1.90 mic

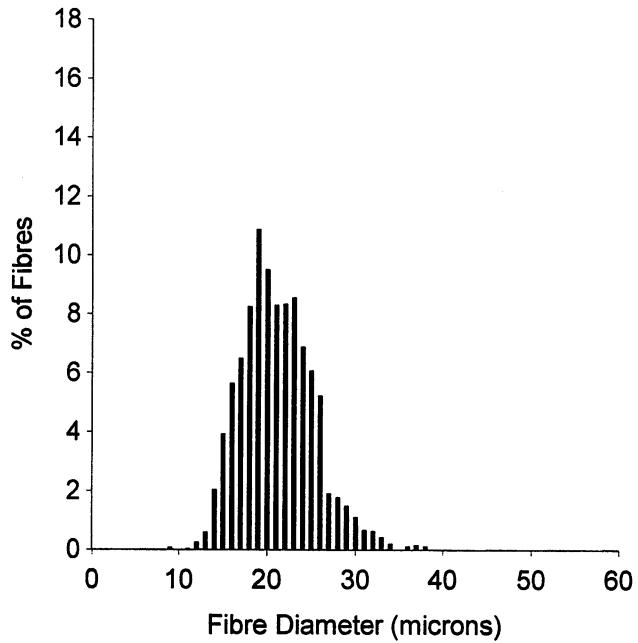


EID :
EarTag : Llama
MicRank : 11
Micron : 30.8 mic
MicDev : +2.4 mic
SD : 7.6 mic
CVD : 24.7 %
CEM : 15.7 mic
<15 : 0.1 %
CF : 55.3 %
SF : 31.0 mic
CRV : 17.9 Dg/mm
SDC : 17.1 Dg/mm

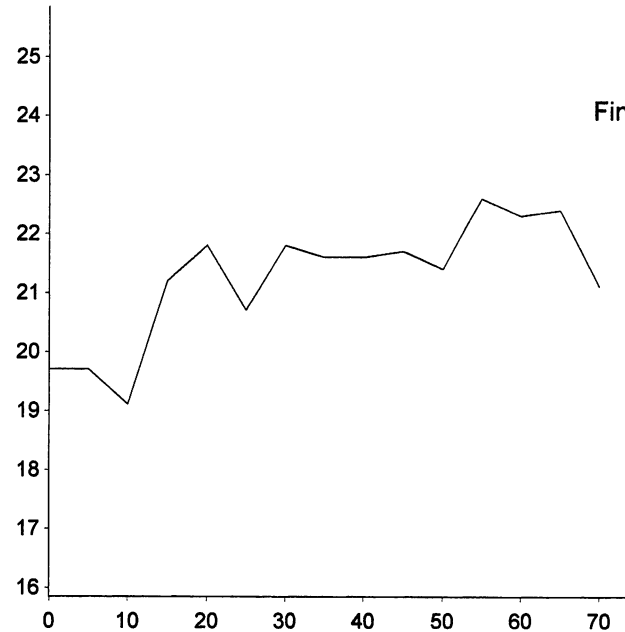


Staple Len : 60.0 mm
Min Mic : 29.3 mic
Max Mic : 33.9 mic
Finest Point From Tip : 50.0 mm
Fibre Ends : 1.4 mic
SD Along : 1.40 mic

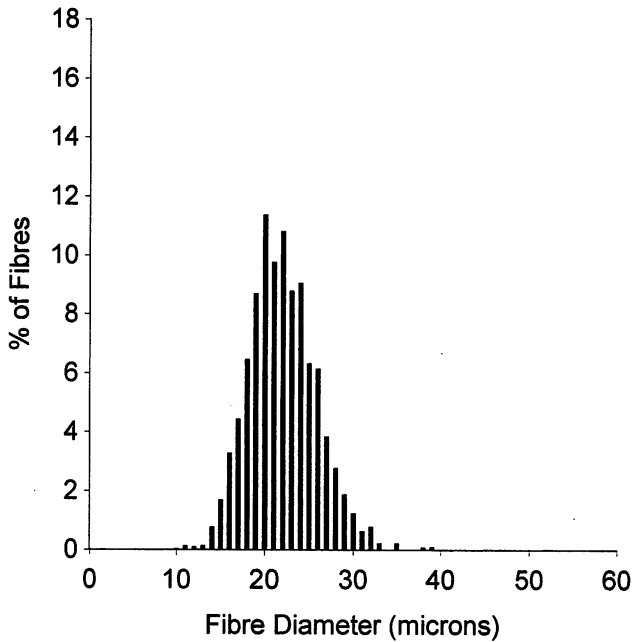
OFDA 2000 REPORT
Local Cloth 1/14/21 (16Records)



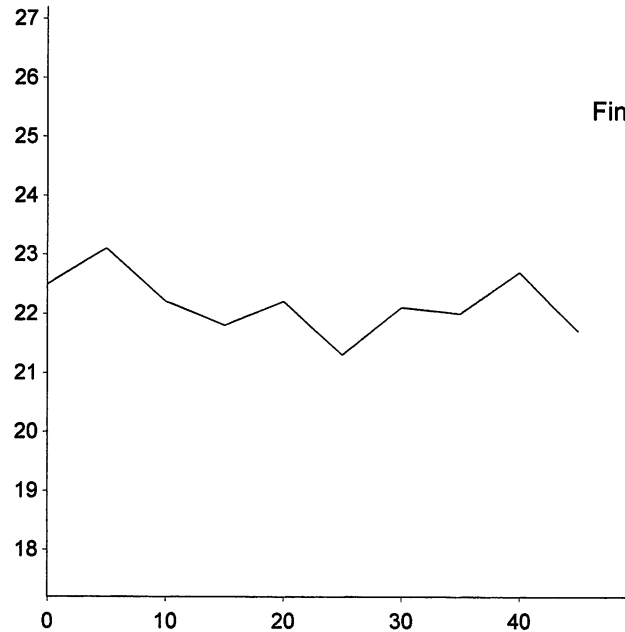
EID :
EarTag : Merino
MicRank : 3
Micron : 21.1 mic
MicDev : -7.3 mic
SD : 4.1 mic
CVD : 19.6 %
CEM : 7.9 mic
<15 : 3.0 %
CF : 97.6 %
SF : 20.3 mic
CRV : 74.4 Dg/mm
SDC : 55.6 Dg/mm



Staple Len : 75.0 mm
Min Mic : 19.1 mic
Max Mic : 22.6 mic
Finest Point From Tip : 10.0 mm
Fibre Ends : -0.7 mic
SD Along : 1.00 mic

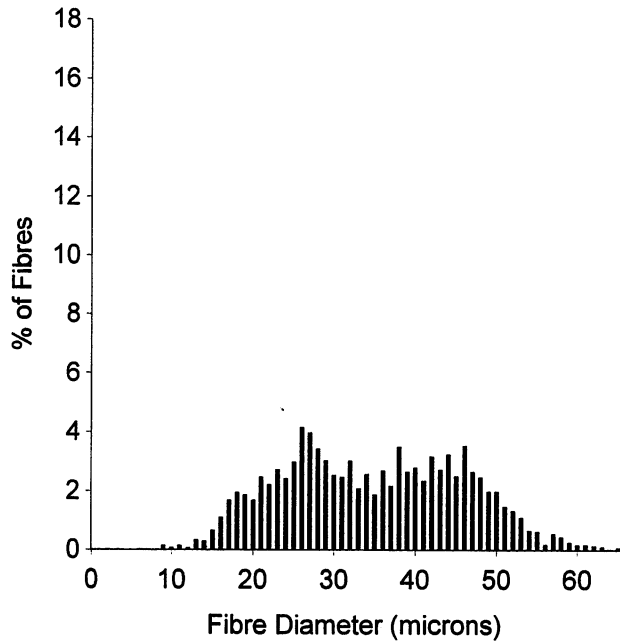


EID :
EarTag : Merino
MicRank : 4
Micron : 22.0 mic
MicDev : -6.4 mic
SD : 3.8 mic
CVD : 17.4 %
CEM : 7.1 mic
<15 : 1.2 %
CF : 97.9 %
SF : 20.8 mic
CRV : 74.0 Dg/mm
SDC : 58.0 Dg/mm

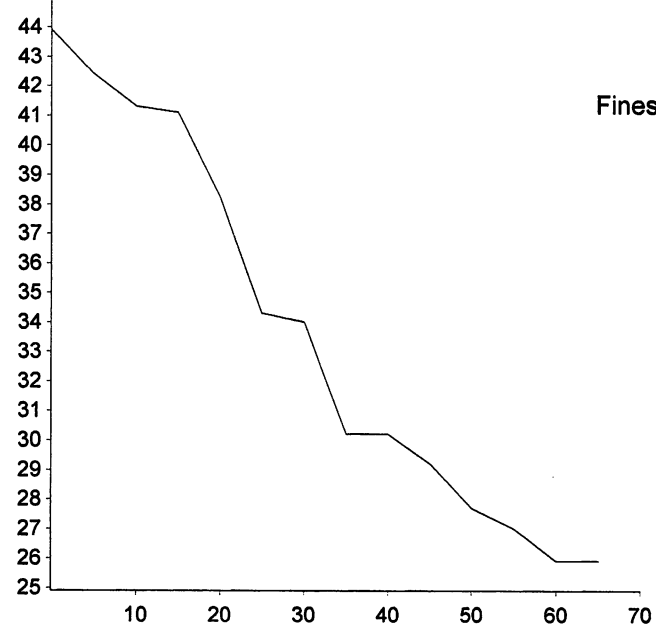


Staple Len : 50.0 mm
Min Mic : 21.3 mic
Max Mic : 23.1 mic
Finest Point From Tip : 25.0 mm
Fibre Ends : 0.1 mic
SD Along : 0.50 mic

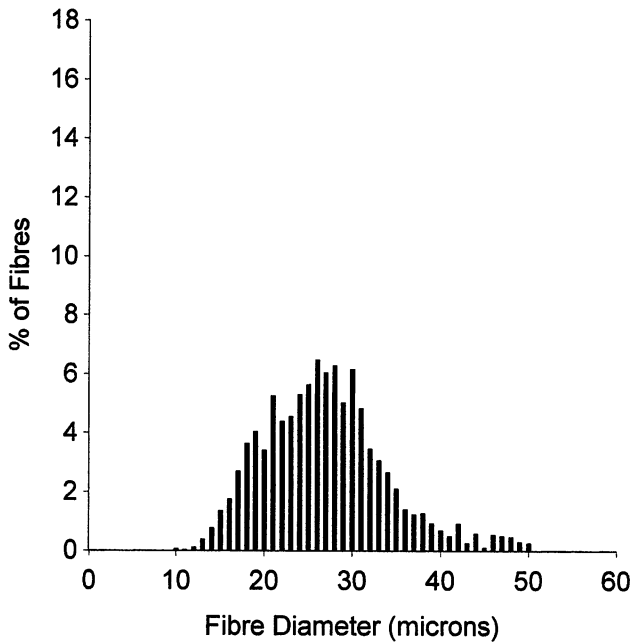
OFDA 2000 REPORT
Local Cloth 1/14/21 (16Records)



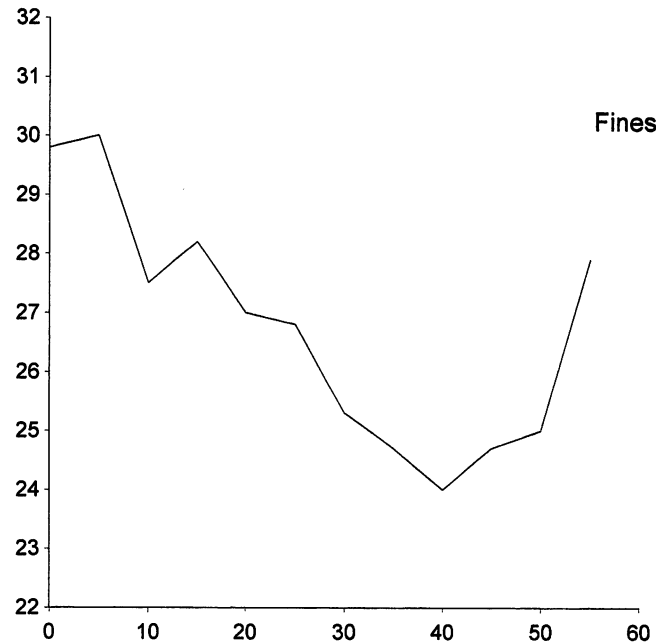
EID :
EarTag : Icelandic w
MicRank : 14
Micron : 34.8 mic
MicDev : +6.4 mic
SD : 11.0 mic
CVD : 31.6 %
CEM : 17.9 mic
<15 : 1.1 %
CF : 40.1 %
SF : 37.5 mic
CRV : 17.7 Dg/mm
SDC : 20.4 Dg/mm



Staple Len : 70.0 mm
Min Mic : 25.9 mic
Max Mic : 43.9 mic
Finest Point From Tip : 60.0 mm
Fibre Ends : 0.1 mic
SD Along : 6.60 mic

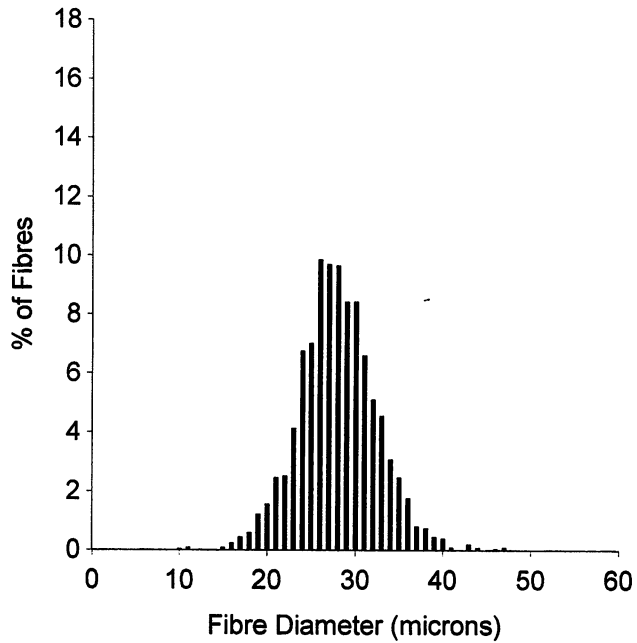


EID :
EarTag : Icelandic in
MicRank : 5
Micron : 26.9 mic
MicDev : -1.5 mic
SD : 7.0 mic
CVD : 26.0 %
CEM : 13.5 mic
<15 : 1.4 %
CF : 73.7 %
SF : 27.4 mic
CRV : 36.0 Dg/mm
SDC : 30.3 Dg/mm

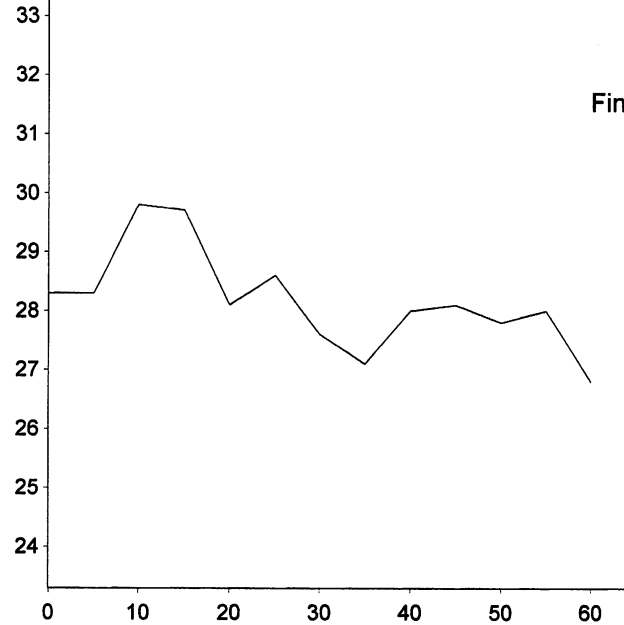


Staple Len : 60.0 mm
Min Mic : 24.0 mic
Max Mic : 30.0 mic
Finest Point From Tip : 40.0 mm
Fibre Ends : 2.0 mic
SD Along : 2.00 mic

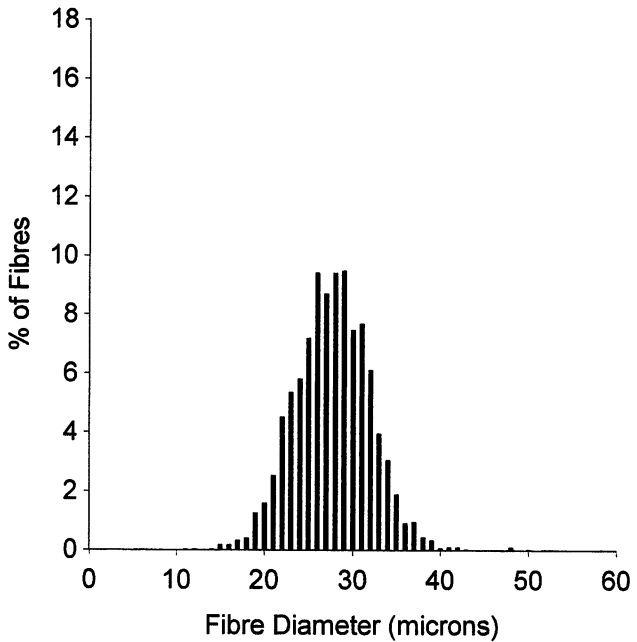
OFDA 2000 REPORT
Local Cloth 1/14/21 (16Records)



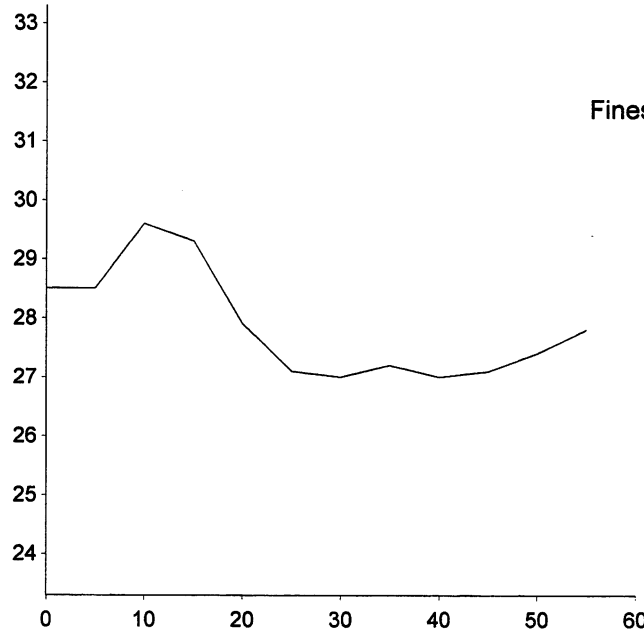
EID :
EarTag : Dorset
MicRank : 7
Micron : 28.0 mic
MicDev : -0.4 mic
SD : 4.5 mic
CVD : 15.9 %
CEM : 7.9 mic
<15 : 0.2 %
CF : 73.4 %
SF : 26.2 mic
CRV : 77.4 Dg/mm
SDC : 62.6 Dg/mm



Staple Len : 65.0 mm
Min Mic : 26.8 mic
Max Mic : 29.8 mic
Finest Point From Tip : 60.0 mm
Fibre Ends : -0.4 mic
SD Along : 0.90 mic

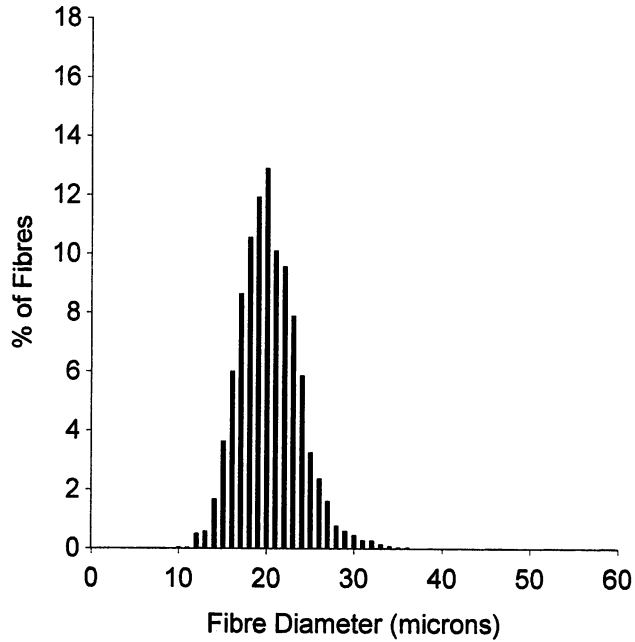


EID :
EarTag : Dorset
MicRank : 6
Micron : 27.7 mic
MicDev : -0.7 mic
SD : 4.3 mic
CVD : 15.5 %
CEM : 7.3 mic
<15 : 0.1 %
CF : 74.1 %
SF : 25.9 mic
CRV : 81.2 Dg/mm
SDC : 58.8 Dg/mm

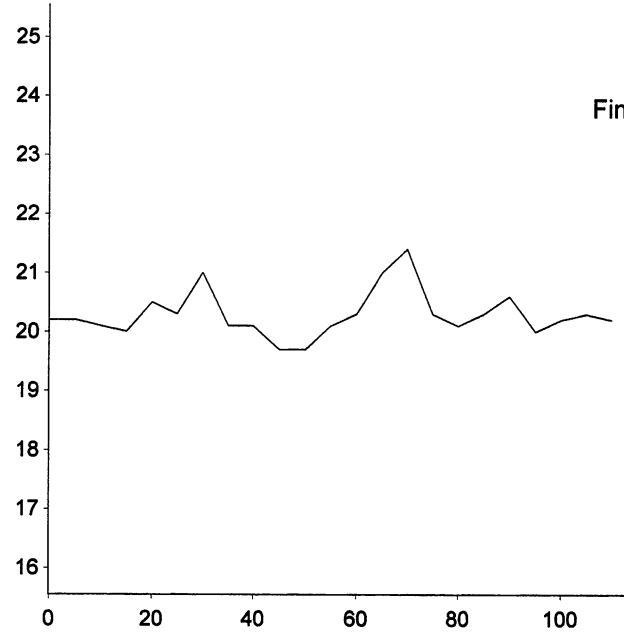


Staple Len : 60.0 mm
Min Mic : 27.0 mic
Max Mic : 29.6 mic
Finest Point From Tip : 30.0 mm
Fibre Ends : 0.4 mic
SD Along : 0.90 mic

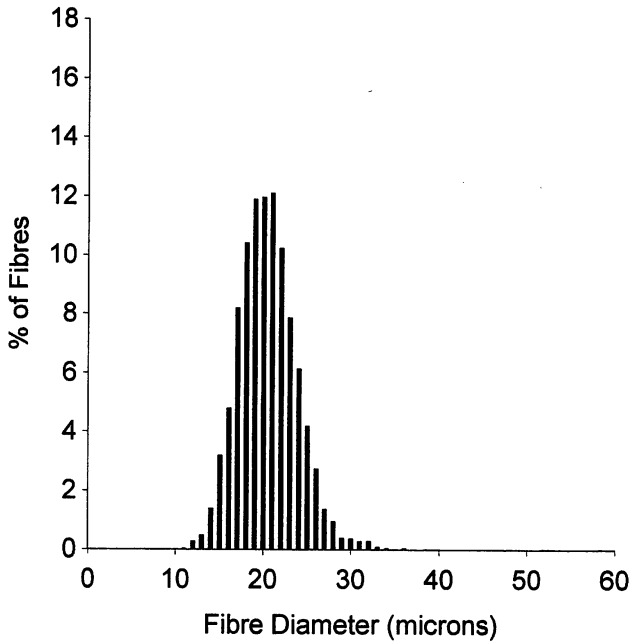
OFDA 2000 REPORT
Local Cloth 1/14/21 (16Records)



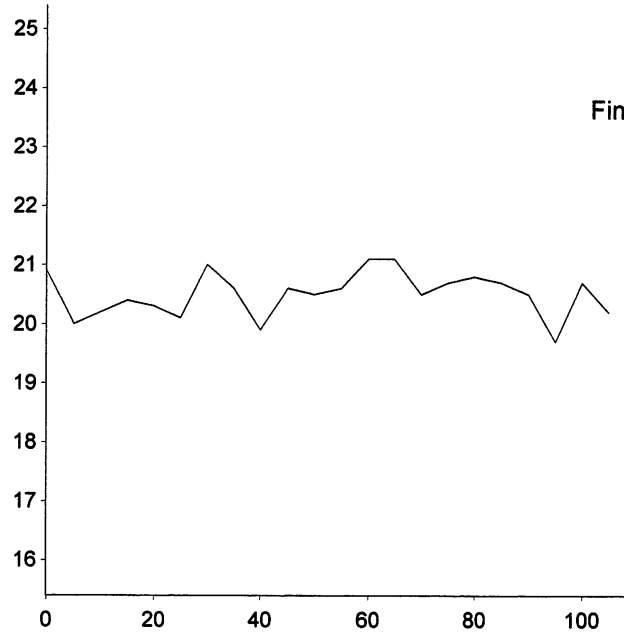
EID :
EarTag : Cormo
MicRank : 1
Micron : 20.3 mic
MicDev : -8.1 mic
SD : 3.4 mic
CVD : 17.0 %
CEM : 6.5 mic
<15 : 2.9 %
CF : 99.1 %
SF : 19.1 mic
CRV : 79.5 Dg/mm
SDC : 58.8 Dg/mm



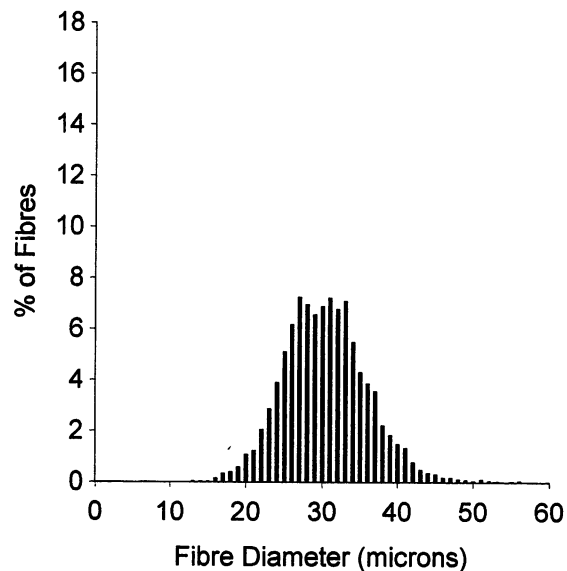
Staple Len : 115.0 mm
Min Mic : 19.7 mic
Max Mic : 21.4 mic
Finest Point From Tip : 45.0 mm
Fibre Ends : -0.1 mic
SD Along : 0.40 mic



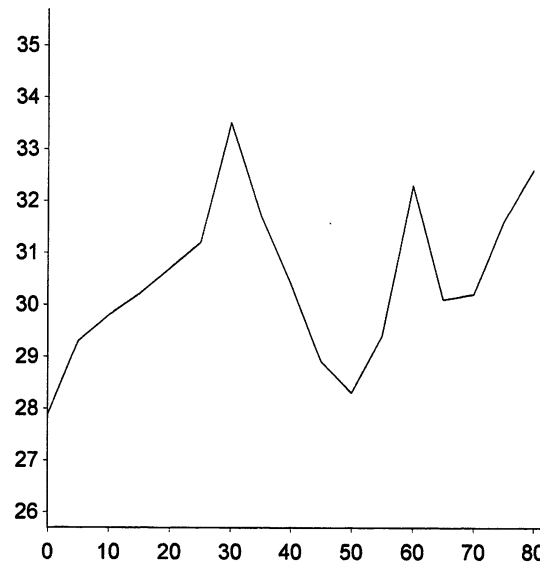
EID :
EarTag : Cormo
MicRank : 2
Micron : 20.5 mic
MicDev : -7.9 mic
SD : 3.3 mic
CVD : 16.3 %
CEM : 6.2 mic
<15 : 2.2 %
CF : 99.2 %
SF : 19.2 mic
CRV : 78.3 Dg/mm
SDC : 59.5 Dg/mm



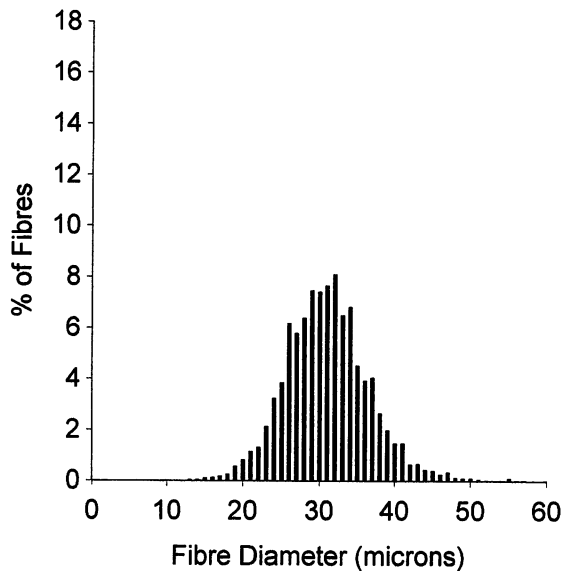
Staple Len : 110.0 mm
Min Mic : 19.7 mic
Max Mic : 21.1 mic
Finest Point From Tip : 95.0 mm
Fibre Ends : 0.1 mic
SD Along : 0.40 mic



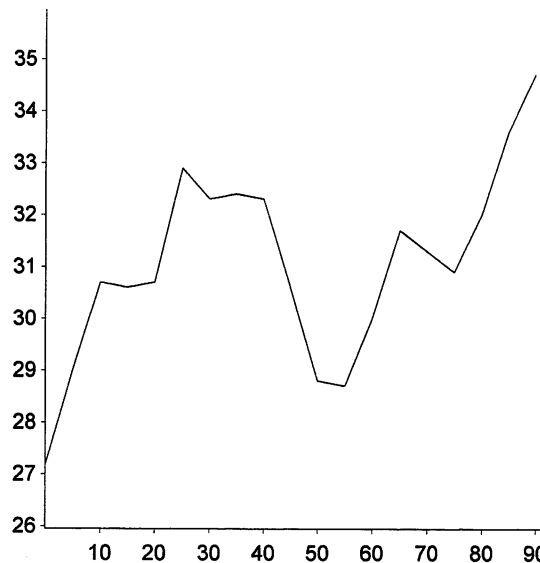
EID :
 EarTag : Romney
 MicRank : 10
 Micron : 30.5 mic
 MicDev : +2.1 mic
 SD : 5.6 mic
 CVD : 18.3 %
 CEM : 10.0 mic
 <15 : 0.1 %
 CF : 51.8 %
 SF : 29.0 mic
 CRV : 60.4 Dg/mm
 SDC : 49.6 Dg/mm



Staple Len : 85.0 mm
 Min Mic : 27.9 mic
 Max Mic : 33.5 mic
 Finest Point From Tip : 0 mm
 Fibre Ends : -0.2 mic
 SD Along : 1.50 mic



EID :
 EarTag : Romney
 MicRank : 12
 Micron : 31.0 mic
 MicDev : +2.6 mic
 SD : 5.5 mic
 CVD : 17.8 %
 CEM : 9.9 mic
 <15 : 0.1 %
 CF : 47.3 %
 SF : 29.4 mic
 CRV : 60.6 Dg/mm
 SDC : 47.3 Dg/mm



Staple Len : 95.0 mm
 Min Mic : 27.2 mic
 Max Mic : 34.7 mic
 Finest Point From Tip : 0 mm
 Fibre Ends : -0.1 mic
 SD Along : 1.80 mic