

**Echoview Fiber Mill**

Phone 855 693 4237

Email. ofda@echoviewviewfibermill.com

76 Jupiter Road

Weaverville, NC 28787

**OFDA 2000 REPORT : Sorted By TAG**

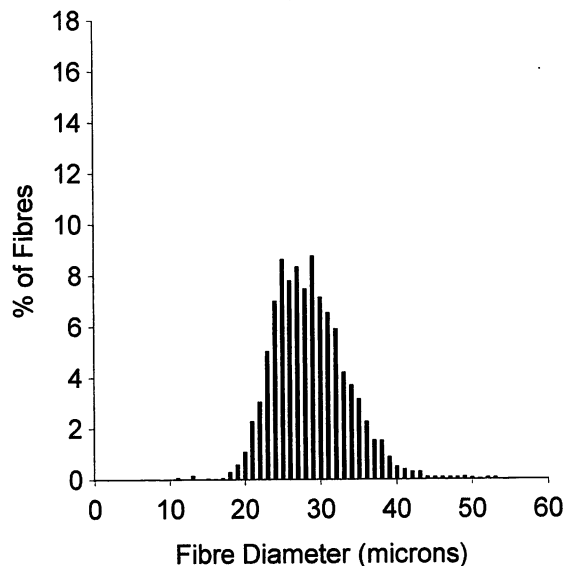
Local Cloth 3/19/21 (6Records)

**Job Details**

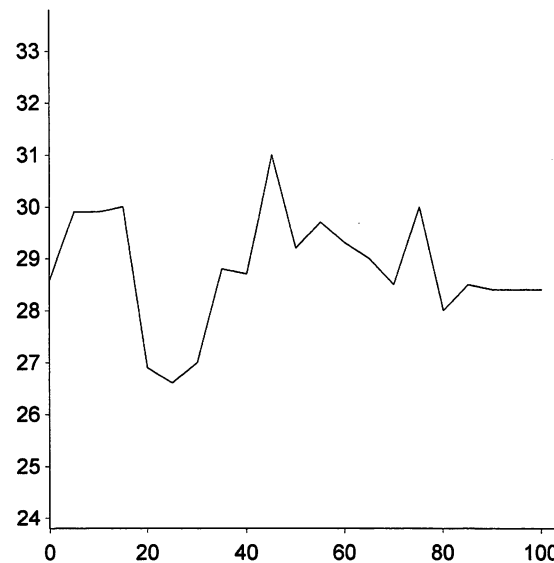
Judi Jetson

Reference: 0223 - 0223

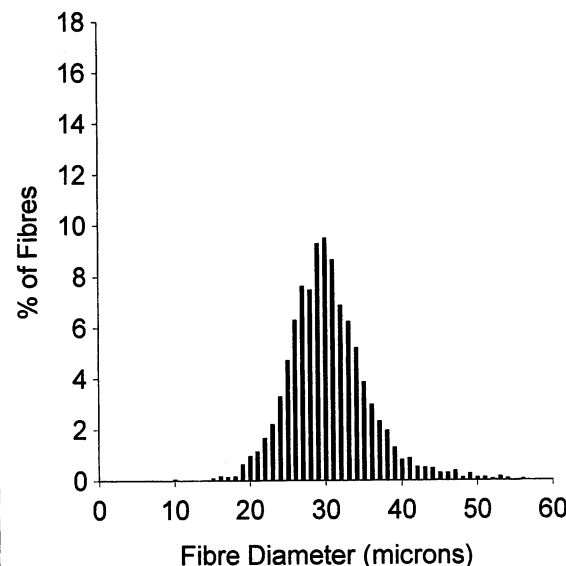
Tested: Mar 19, 2021



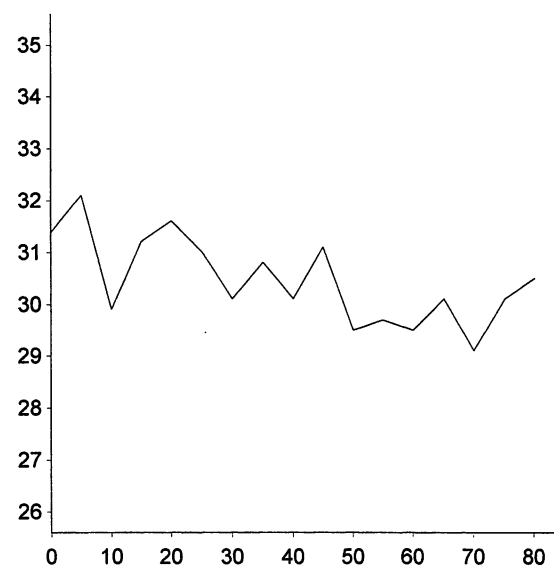
EID :  
 EarTag : Romney X  
 MicRank : 1  
 Micron : 28.7 mic  
 MicDev : -1.4 mic  
 SD : 5.0 mic  
 CVD : 17.5 %  
 CEM : 9.2 mic  
 <15 : 0.2 %  
 CF : 67.8 %  
 SF : 27.1 mic  
 CRV : 39.1 Dg/mm  
 SDC : 29.8 Dg/mm  
 C. Haut : 92.1 mm



Staple Len : 105.0 mm  
 Min Mic : 26.6 mic  
 Max Mic : 31.0 mic  
 Finest Point From Tip : 25.0 mm  
 Fibre Ends : -0.2 mic  
 SD Along : 1.10 mic

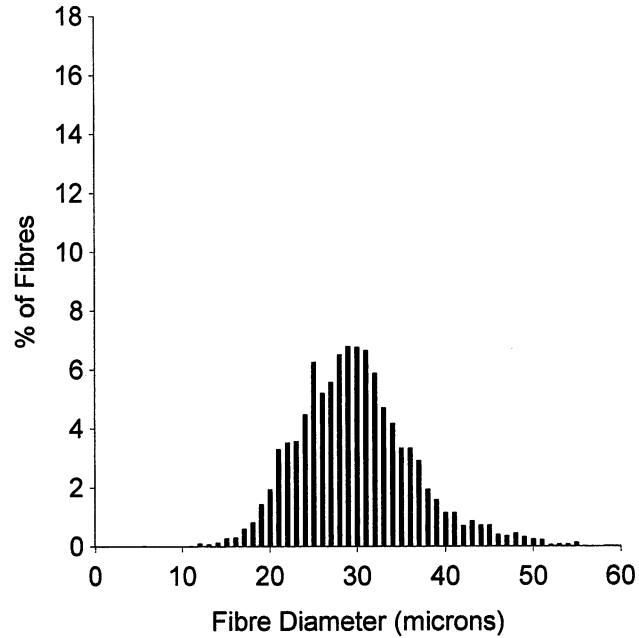


EID :  
 EarTag : Romney X  
 MicRank : 4  
 Micron : 30.4 mic  
 MicDev : +0.3 mic  
 SD : 5.4 mic  
 CVD : 17.8 %  
 CEM : 9.9 mic  
 <15 : 0.1 %  
 CF : 55.4 %  
 SF : 28.8 mic  
 CRV : 31.8 Dg/mm  
 SDC : 28.0 Dg/mm  
 C. Haut : 87.2 mm

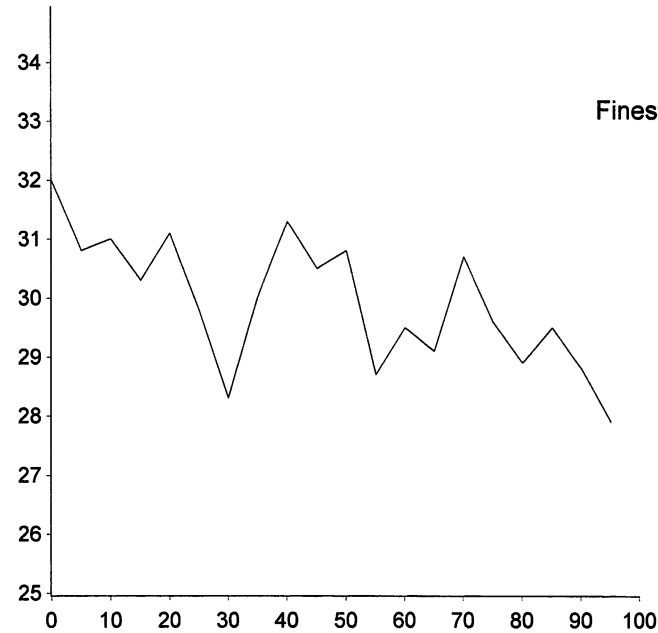


Staple Len : 85.0 mm  
 Min Mic : 29.1 mic  
 Max Mic : 32.1 mic  
 Finest Point From Tip : 70.0 mm  
 Fibre Ends : 0.6 mic  
 SD Along : 0.80 mic

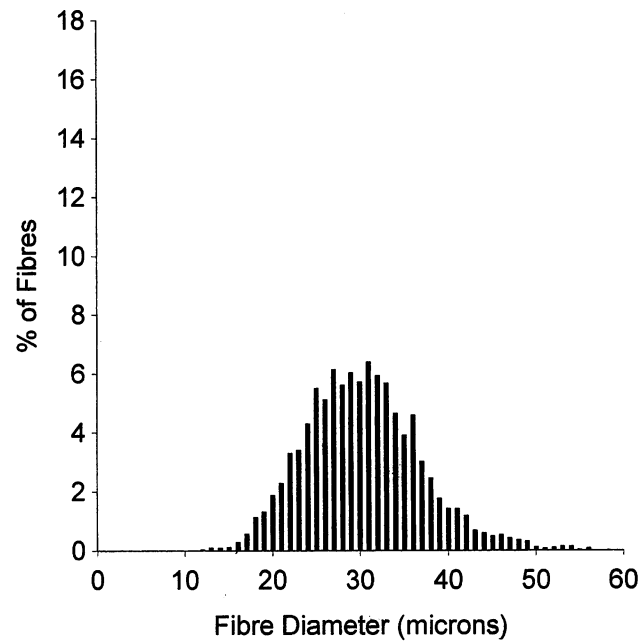
**OFDA 2000 REPORT : Sorted By TAG**  
Local Cloth 3/19/21 (6Records)



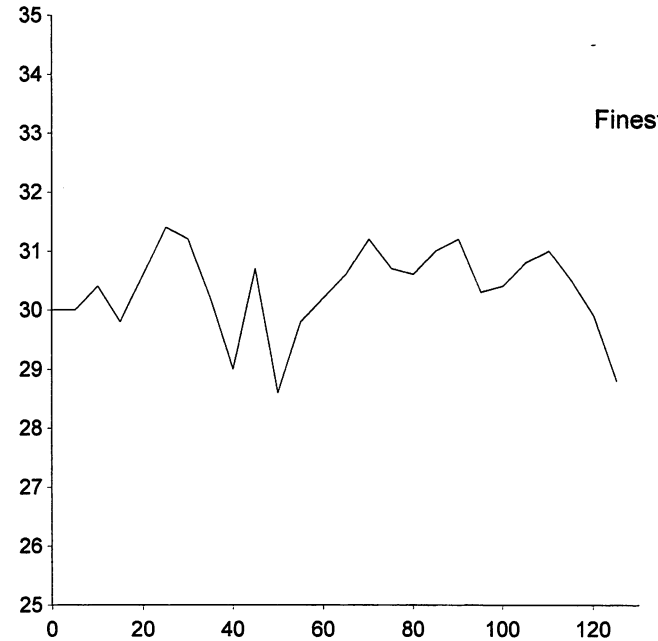
EID :  
 EarTag : Gulf Coast  
 MicRank : 2  
 Micron : 29.8 mic  
 MicDev : -0.3 mic  
 SD : 6.6 mic  
 CVD : 22.2 %  
 CEM : 12.7 mic  
 <15 : 0.3 %  
 CF : 57.7 %  
 SF : 29.3 mic  
 CRV : 54.8 Dg/mm  
 SDC : 45.6 Dg/mm  
 C. Haut : 93.4 mm



Staple Len : 100.0 mm  
 Min Mic : 27.9 mic  
 Max Mic : 32.0 mic  
 Finest Point From Tip : 95.0 mm  
 Fibre Ends : 0.2 mic  
 SD Along : 1.10 mic

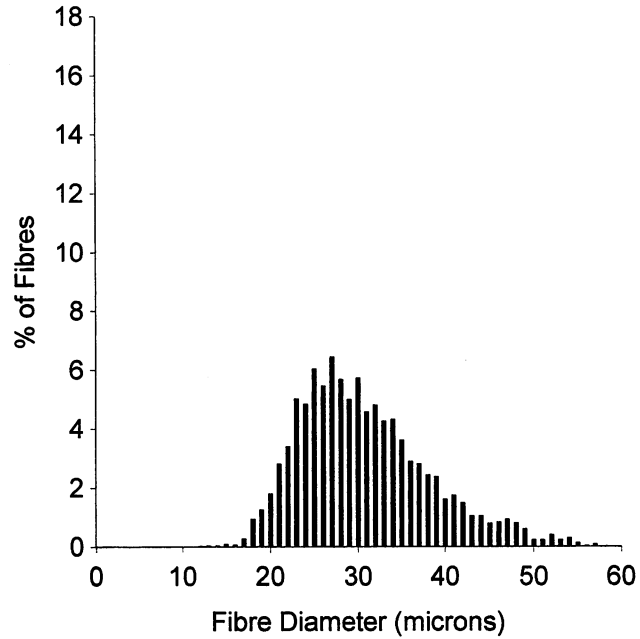


EID :  
 EarTag : Gulf Coast  
 MicRank : 3  
 Micron : 30.3 mic  
 MicDev : +0.2 mic  
 SD : 6.6 mic  
 CVD : 21.9 %  
 CEM : 12.1 mic  
 <15 : 0.3 %  
 CF : 53.2 %  
 SF : 29.7 mic  
 CRV : 52.3 Dg/mm  
 SDC : 44.6 Dg/mm  
 C. Haut : 101.0 mm

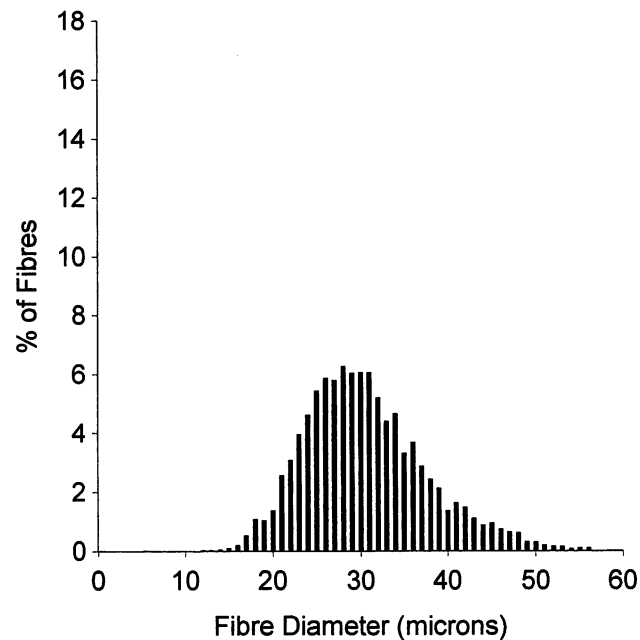
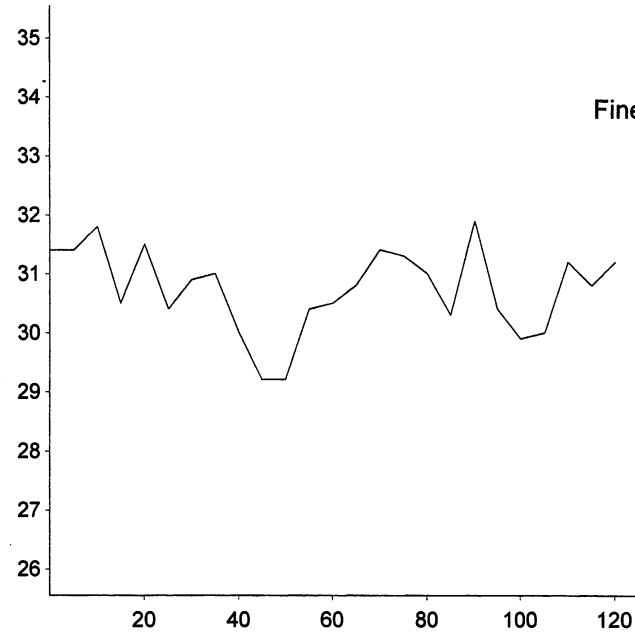


Staple Len : 130.0 mm  
 Min Mic : 28.6 mic  
 Max Mic : 31.4 mic  
 Finest Point From Tip : 50.0 mm  
 Fibre Ends : -0.9 mic  
 SD Along : 0.70 mic

**OFDA 2000 REPORT : Sorted By TAG**  
Local Cloth 3/19/21 (6Records)



EID :  
EarTag : Finn A  
MicRank : 6  
Micron : 30.7 mic  
MicDev : +0.6 mic  
SD : 7.5 mic  
CVD : 24.3 %  
CEM : 15.2 mic  
<15 : 0.1 %  
CF : 55.1 %  
SF : 30.8 mic  
CRV : 30.4 Dg/mm  
SDC : 30.7 Dg/mm  
C. Haut : 100.1 mm



EID :  
EarTag : Finn B  
MicRank : 5  
Micron : 30.6 mic  
MicDev : +0.5 mic  
SD : 7.0 mic  
CVD : 22.8 %  
CEM : 13.8 mic  
<15 : 0.1 %  
CF : 54.2 %  
SF : 30.3 mic  
CRV : 33.0 Dg/mm  
SDC : 29.4 Dg/mm  
C. Haut : 96.0 mm

